

SCAN  
TO VIEW  
WEB PAGE



Endless possibilities with  
**ADAPTASTEP™**  
The Scalable Solution that Adapts to Any Height Challenge

800-869-1525

SALES@SAFESMARTACCESS.COM

SAFESMARTACCESS.COM



### **Saves Time and Money**

The prefabricated modular design eliminates the costs associated with custom fabrication, time consuming multi-component assembly and inconvenient 'cookie cutter' dimensions.



### **Easy to Assemble**

All bolted connections. No onsite welding, cranes or special assembly tools needed. The handrails are quickly connected to 'tee slot' side rails with special 'tee bolts' that insert directly into the extrusion. This allows the rails to be positioned without the time consuming and inaccurate lining up typical with predrilled holes. A simple twist with a typical driver and they are locked on, or removed as required.



### **Immediate Quotes in Real Time**

Quotes and drawings are auto generated in real time with Design Configuration software that allows the user to load in dimensions.



### **Fully Compliant**

Various components are available for the stair gradient, step dimensions and handrail designs to meet all relevant OSHA, IBC and ADA standards and regulations.



### **Limitless Configurations**

Easily configure the stair modular components for any size, height or shape. The AdaptaStep system is designed using aluminium extrusions that 'nest' into the adjacent extrusion to form long, strong horizontal spans in 4 inch increments.



### **Experts Available**

Not sure what you need? Our design team is adept at solving complex challenges and can provide engineering support when required. A hand drawn sketch, photos and dimensions is all we need to get things going.



# PREFABRICATED MODULAR STAIRS AND PLATFORMS

AdaptaStep bridges the gap between time-consuming, multi-component systems and rigid, one-size-fits-all solutions. It's designed to provide unmatched versatility and cost-efficiency without compromising safety or functionality.

With minimal, pre-engineered components, AdaptaStep can be quickly connected and configured into virtually any shape or layout. Whether navigating over pipes, conveyors, or ducting, around machinery, or across voids, AdaptaStep delivers safe and reliable access in even the most challenging environments.

**Customizable:** Tailor it to your exact requirements with endless configuration possibilities.

**Lightweight & Modular:** Perfect for tight spaces or areas with limited access.

**Easy Installation:** No specialist tools or machinery required, reducing time and labor costs.

**Durable Design:** Engineered for safety and strength, ensuring reliable access for years to come.

AdaptaStep simplifies access challenges, making it the go-to solution for safe, efficient, and adaptable worksite access.



LIGHTWEIGHT  
ALUMINUM



HOLDS UP  
TO 1100LBS



CUSTOMIZE  
WITH EASE



RAIL COLOR  
OPTIONS



QUICK  
INSTALL



EXTENDED  
CLEAR SPAN

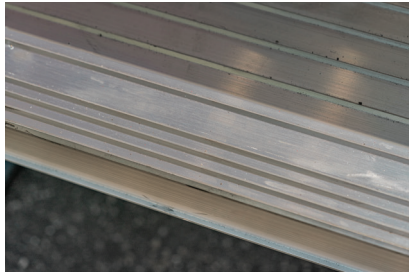


ROOF  
ACCESS

MADE  
EASY

# KEY FEATURES

---



## PLATFORM AND STEP EXTRUSIONS

Nesting shape design for added strength and fast thread bolts for quick attachment. Available in 4" and 9.5" widths.



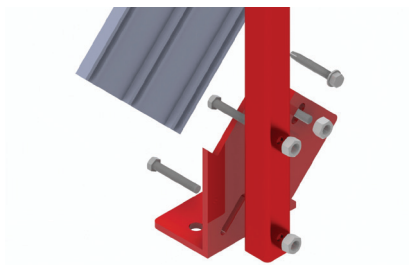
## STRUCTURAL SUPPORT EXTRUSION

No drilling required. Quick-attach handrails easily attach to any point along the tee slot with off-the-shelf fasteners or SafeSmart Tee bolts. Two tee slot extrusion shapes are available for clear spans of up to 20ft.



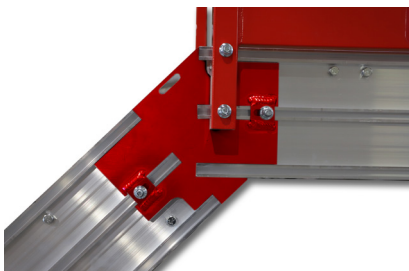
## PRE-FORMED POWDER COATED HANDRAIL PANELS

Easily join panels together for continuous protection with up to 8ft spans between posts. Each panel corresponds to the platform and step dimensions for easy and safe assembly.



## STAIR MOUNTING PLATE

The mounting plate joins effortlessly into the tee slot stair plate. The structure of the plate enables the tee bolt to be easily inserted and fastened while the Tee Slot extrusions avoid interference with the handrail components.



## CONNECTION ELEMENTS

The T-Slot design allows for a fast and safe connection of multiple extrusions. Specially designed tee slot ridges offer extra strength and zero interference with handrail and leg placements. Easy to customize on the job site with standard aluminum cutting equipment for a rust-resistant, configurable design that will withstand the harshest of conditions.

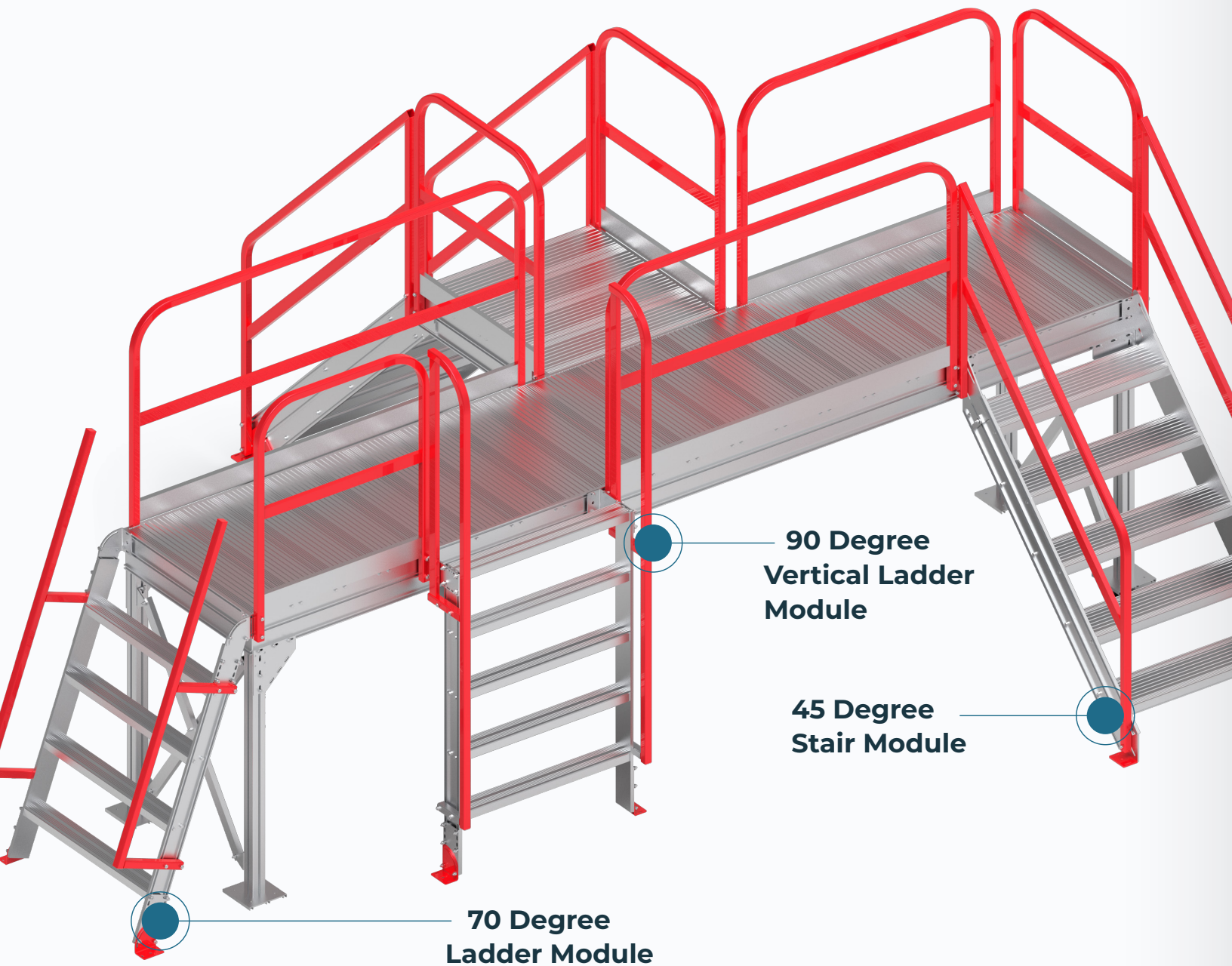


## SPECIAL HARDWARE

**Thread forming, high-tensile screws.** Provides a perfect fit for extrusions up to four inches for a strong and secure connection that can be untightened and removed if necessary. Tested in full saltwater emersion for 3,000 hours with no visible signs of rust.

**T-Bolts** are designed especially for SafeSmart Access equipment for a quick, 90 degree twist lock within the tee slot. Perfect for securing connectors and handrail posts.

# MODULAR COMPONENTS





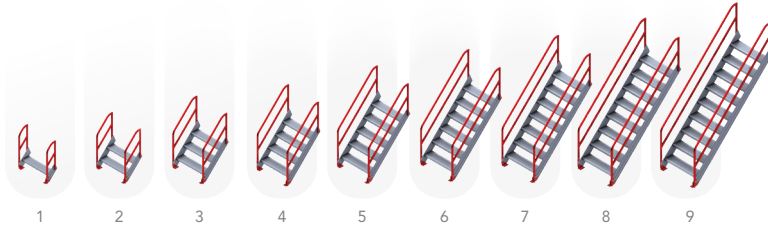
## 45 DEGREE STAIR MODULE

- 9.5 inch tread length, 9.5 inch height between steps
- Ribbed and perforated steps
- Handrails bolt to sides of the stair

### MODULE DIMENSIONS

TREAD WIDTH	VERTICAL HEIGHT
24 inch	From 19 inch to 12 feet in 9.5 inch increments
36 inch	
48 inch	

Available in 1 to 9 step configurations



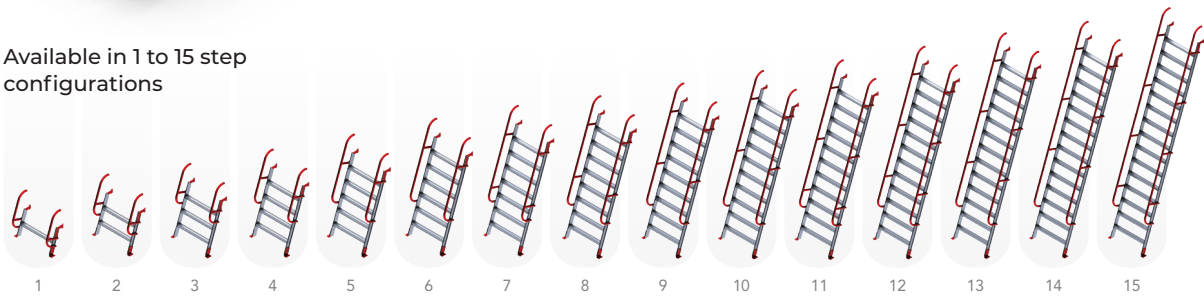
## 70 DEGREE LADDER MODULE

- Typical step height is 12 inches, 70 degree gradient
- Includes 2 handrails which bolt to the sides of the ladder

### MODULE DIMENSIONS

TREAD WIDTH	VERTICAL HEIGHT
24 inch	From 24 inch to 12 feet in 12 inch increments
36 inch	
48 inch	

Available in 1 to 15 step configurations



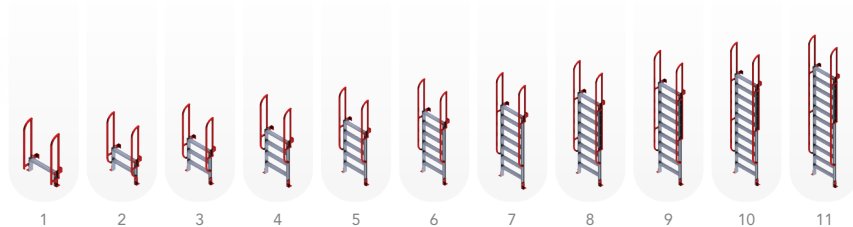
## 90 DEGREE LADDER MODULE

- Typical rung spacing 12 inches
- Includes 2 handrails which bolt to the sides of the ladder
- 2 standard widths: 3ft and 4ft

### MODULE DIMENSIONS

TREAD WIDTH	VERTICAL HEIGHT
24 inch	From 24 inch to 12 feet in 12 inch increments
36 inch	
48 inch	

Available in 1 to 11 rung configurations



# LIMITLESS CREATIONS & CONFIGURATIONS

AdaptaStep offers true configurability, allowing facilities to create custom access solutions that fit their exact layout. Its modular components—stairs, platforms, and supports—can be arranged in various heights, lengths, and orientations to safely bridge over piping, ductwork, or elevation changes. This flexibility eliminates the need for custom fabrication and ensures fast, OSHA-compliant access in even the most complex environments. AdaptaStep can be used to create efficient wall-mounted catwalks, crossovers, platforms, and more.

## RAMPS & BRIDGES

Pair handrails and platforms for an easy and lightweight access over or onto your jobsite.



## CROSSOVERS

Easily connect components onsite or use preassembled packages to safely cross pipes, roof units, or any other obstacle onsite!



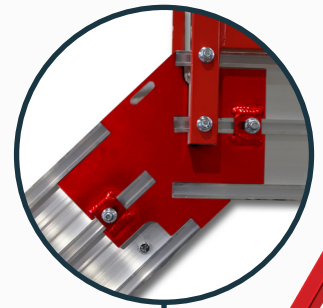
## CUSTOM ENGINEERED SOLUTIONS

Our in-house design and engineering team is here to help. Share your access or obstacle challenges with us, and we will deliver a safe and efficient design solution. The sky is the limit!



## 45 DEGREE JOINER

Attaches stairs platforms





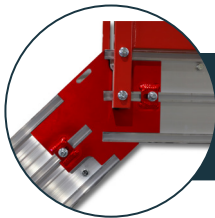
**T-BOLT**  
Extrusion fastening  
system for easy  
installation.

**STAIR FOOT**  
Attaches stair to  
landing surface

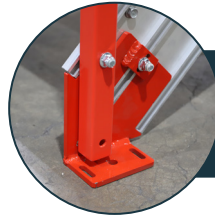
# STANDARD JOINERS & ATTACHMENTS

---

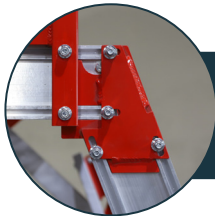
Our dynamic joiners and connection brackets are the key to AdaptaStep's unmatched configurability. Engineered to securely link modular components together, these joiners allow the system to be tailored to fit unique site conditions with precision and ease. Whether you're building a straight staircase, a 90° turn onto a platform, or a 45° or 70° angled egress around equipment or obstructions, these components make it possible—without cutting, welding, or fabrication.



**45 DEGREE JOINER**



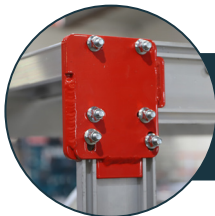
**45 DEGREE FOOT**



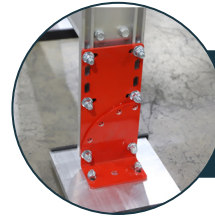
**70 DEGREE JOINER**



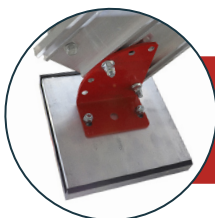
**70 DEGREE FOOT**



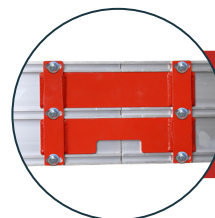
**90 DEGREE JOINER**



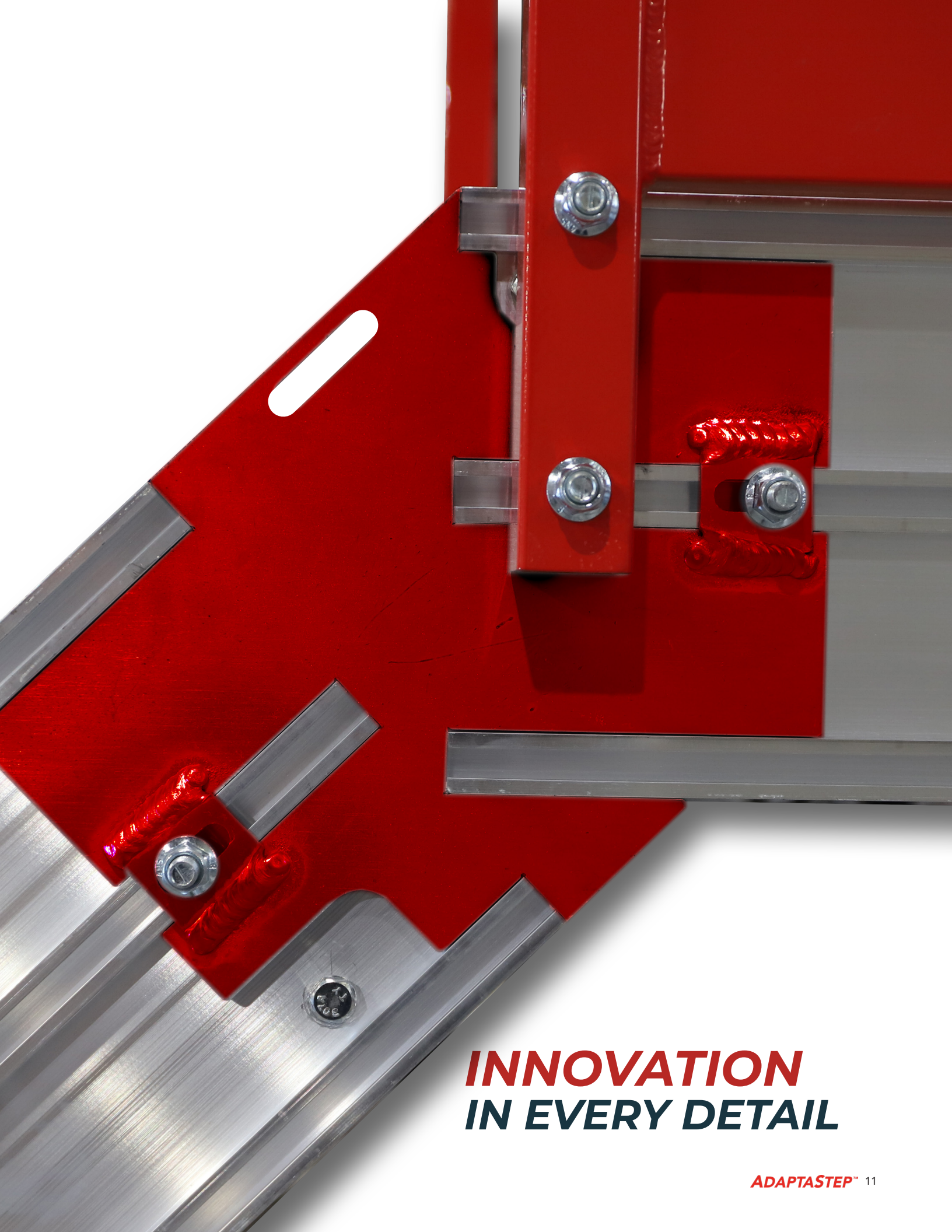
**90 DEGREE FOOT**



**NON-PENETRATING  
FOOT**



**STRAIGHT SLOT  
JOINER**



***INNOVATION  
IN EVERY DETAIL***



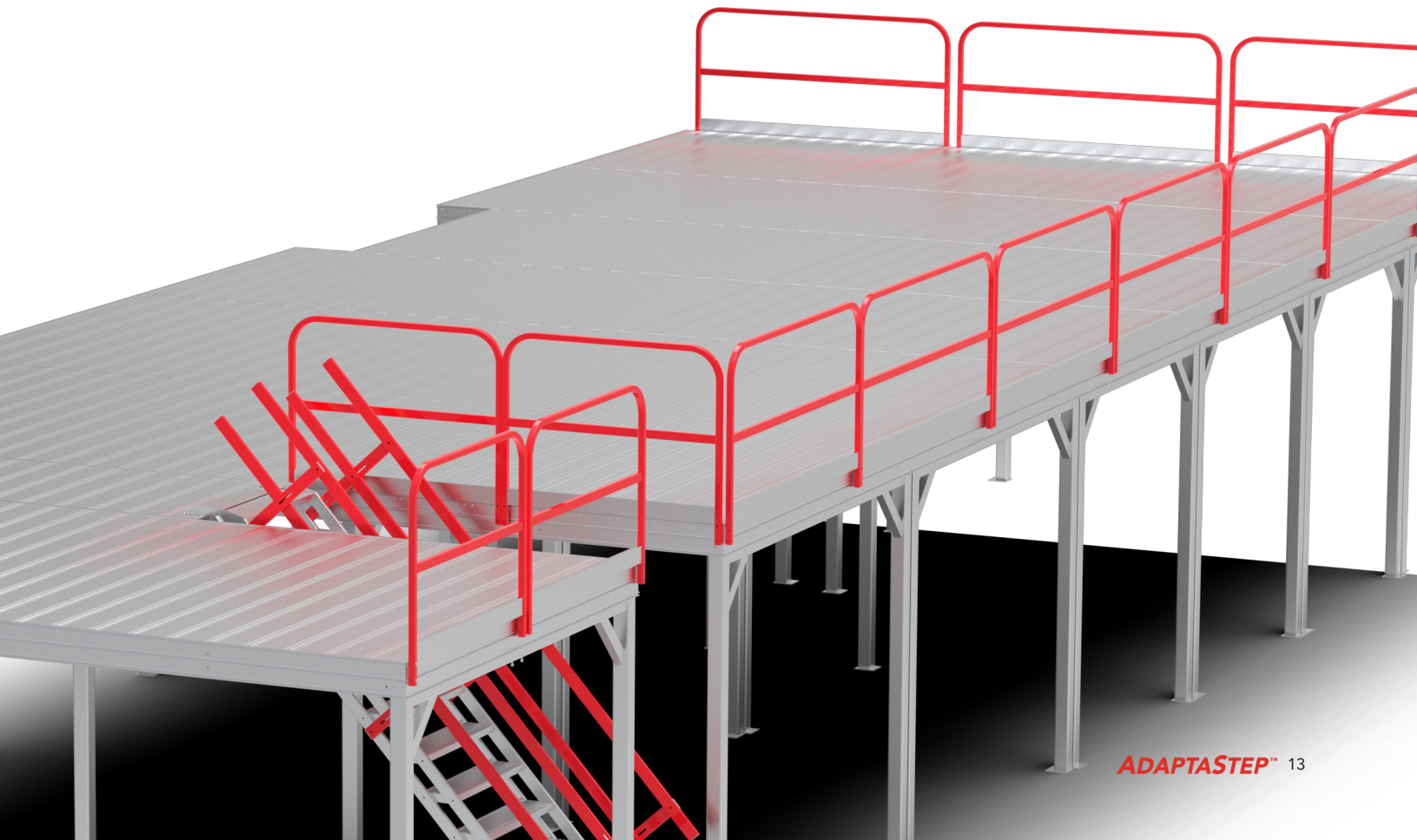
## ADAPTASTEP™ FOR MEZZANINES

AdaptaStep™ can be configured into a mezzanine platform system designed for fast, safe, and compliant elevated access in industrial environments. Whether you're building a standalone work zone or accessing large inverters, AdaptaStep delivers durable performance with rapid install and zero custom fabrication—keeping your facility efficient and adaptable.

### WHY USE ADAPTASTEP?

Mezzanine areas demand safe, code-compliant access without disrupting floor operations. AdaptaStep's modular Tee Slot system offers unmatched flexibility for new installs or retrofits—supporting live loads, material handling, and personnel movement with confidence.

- ▶ Supports 100LBS/SQ-FT - Ideal for Personnel, Carts, & Materials
- ▶ Adjustable Legs & Leveling for Sloped or Uneven Surfaces
- ▶ T-Slot Framing for Fast, Bolt-Together Assembly - No Welding Needed
- ▶ Continuous, Gap-Free Deck Surfaces
- ▶ Fully OSHA-Compliant
- ▶ Expands as Needed - Scalable, Reconfigurable, and Built to Last.



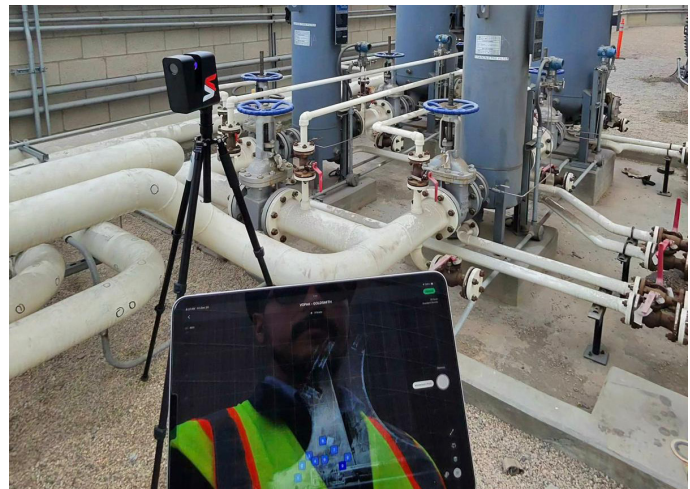
# CUSTOM PROJECTS & 3D LIDAR SCANNING

---

When it comes to custom access solutions, precision is everything. That's why our 3D LiDAR scanning service is a game-changer. By using advanced laser technology, we create a detailed, accurate 3D model of your site, capturing every measurement, obstruction, and unique condition. This ensures that your solution fits perfectly, works seamlessly, and is designed with efficiency and safety in mind. Whether you're navigating complex layouts or tight spaces, LiDAR eliminates guesswork, so you get a tailored solution that's built right the first time. Let's bring your vision to life—safely and precisely.

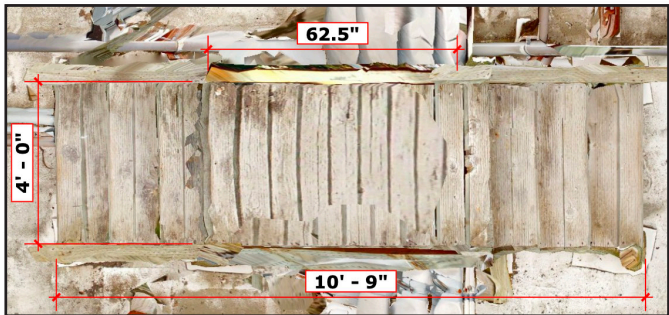
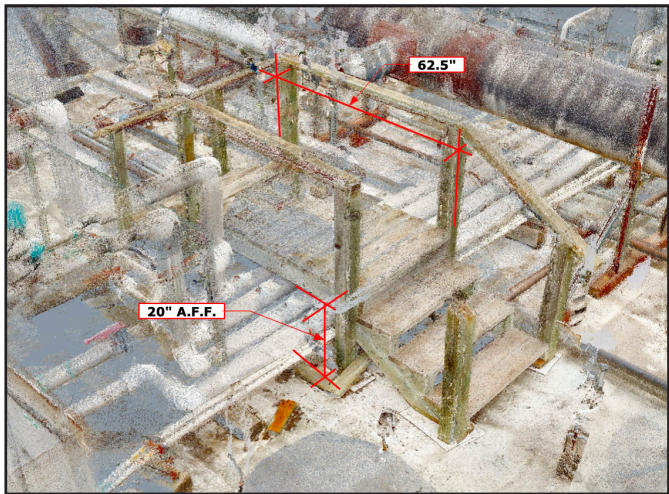
## SCANNING PROCESS:

- **On-Site Data Collection:** Comprehensive logistics planning to identify where and how solutions would be set and installed.
- **Precision Measurements:** Accurate measurements of length, width, and height to ensure a perfect fit for your project.
- **Detailed Site Analysis:** Captured photos to highlight obstructions and existing conditions.
- **Advanced LiDAR Scanning:** Pulsed lasers to measure distances and create an accurate 3D model of the work area.
- **3D Model Visualization:** Deliver a detailed design intent for clarity and alignment with project goals.
- **Scope of Work Layout:** Present a complete project layout based on all data and notes collected on-site.



# SCOPE OF WORK LAYOUT EXAMPLES:

The Scope of Work Layout delivers detailed measurements, site data, and a 3D model to ensure every aspect of your custom access solution is clear and accurate. This comprehensive packet provides the confidence needed to move forward seamlessly. See examples below.





# **LIMITLESS** **CONFIGURATIONS.**

Easily customize the AdaptaStep to fit your needs!



# PROJECT PROFILE: ELIMINATING FALL HAZARDS FOR BRENNTAG

## THE CHALLENGE

Obstructions and pipes are some of the most overlooked yet hazardous elements on industrial and construction sites. These obstacles create unnecessary fall hazards that can lead to accidents, injuries, and potential OSHA violations. Often, workers—including maintenance crews and inspectors—must step over these obstructions, increasing the risk of tripping or falling. Brenntag recognized the critical need for a safe and compliant solution to address these dangers and provide sufficient cross-over access for their team.

## THE SOLUTION

To eliminate fall hazards and ensure OSHA compliance, Brenntag selected AdaptaStep crossover platforms for their site. Designed to tackle challenges like obstructions and limited access areas, AdaptaStep was the perfect choice for this project.

## WHY ADAPTASTEP?

**Flat-Pack Shipping:** AdaptaStep's lightweight, pre-engineered components were shipped flat-packed, making transportation and delivery to the site efficient and cost-effective.

**Fast Installation:** With minimal bolt-on components, AdaptaStep was installed quickly, minimizing downtime and labor requirements.

**Modular Design:** AdaptaStep's modular configuration allowed it to seamlessly integrate into Brenntag's site layout, ensuring proper fit and functionality over pipes and other obstacles.

**Safety First:** The crossover system eliminated the need for workers to step over hazardous obstructions, creating a safer environment for everyone onsite.

**Durable Construction:** Engineered with high-strength, rust-resistant aluminum, AdaptaStep offers long-term reliability and durability, ideal for industrial settings.

## THE RESULT

The AdaptaStep crossover platforms provided Brenntag with a safe and effective way to navigate their site's unique challenges. Maintenance crews and inspectors can now move freely and safely without worrying about obstructions or fall hazards, ensuring smoother operations and a safer work environment.



ADAPTASTEP™

ADAPTASTEP™

THE STANDARD IN  
**FACILITY  
SAFETY**

# PROJECT PROFILE: ELIMINATING FALL HAZARDS FOR LINDE ELECTRONICS

## OVERVIEW

When Linde Electronics, a leading industrial gas and technology company, needed a safer and more efficient application unit access system for their Phoenix facility, they came to SafeSmart Access with a challenge:

How do you safely reach elevated service areas surrounded by fixed structures, while maintaining compliance and minimizing site disruption?

The solution required more than a standard stair or ladder, it necessitated a fully customized, modular vertical access system designed to seamlessly navigate around existing application unit structures and obstructions. This innovative approach ensures maintenance teams always have secure, uninterrupted access to critical equipment and required locations.

## THE CHALLENGE

Linde relied on ladders and temporary scaffolding for maintenance access, creating fall hazards, interrupting workflow, and failing to comply with OSHA standards. Their layout included obstructions and tight configuration, requiring a permanent solution that prioritized:

- Safe elevation above roof-mounted equipment
- Full perimeter protection
- Seamless integration with existing structures

## OUR SOLUTION

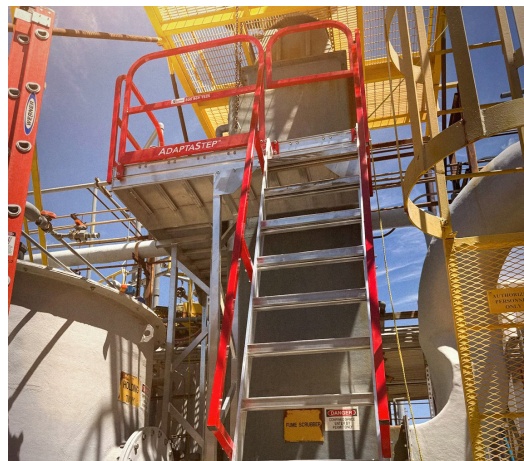
We designed and delivered a custom wraparound AdaptaStep system tailored to Linde's rooftop geometry:

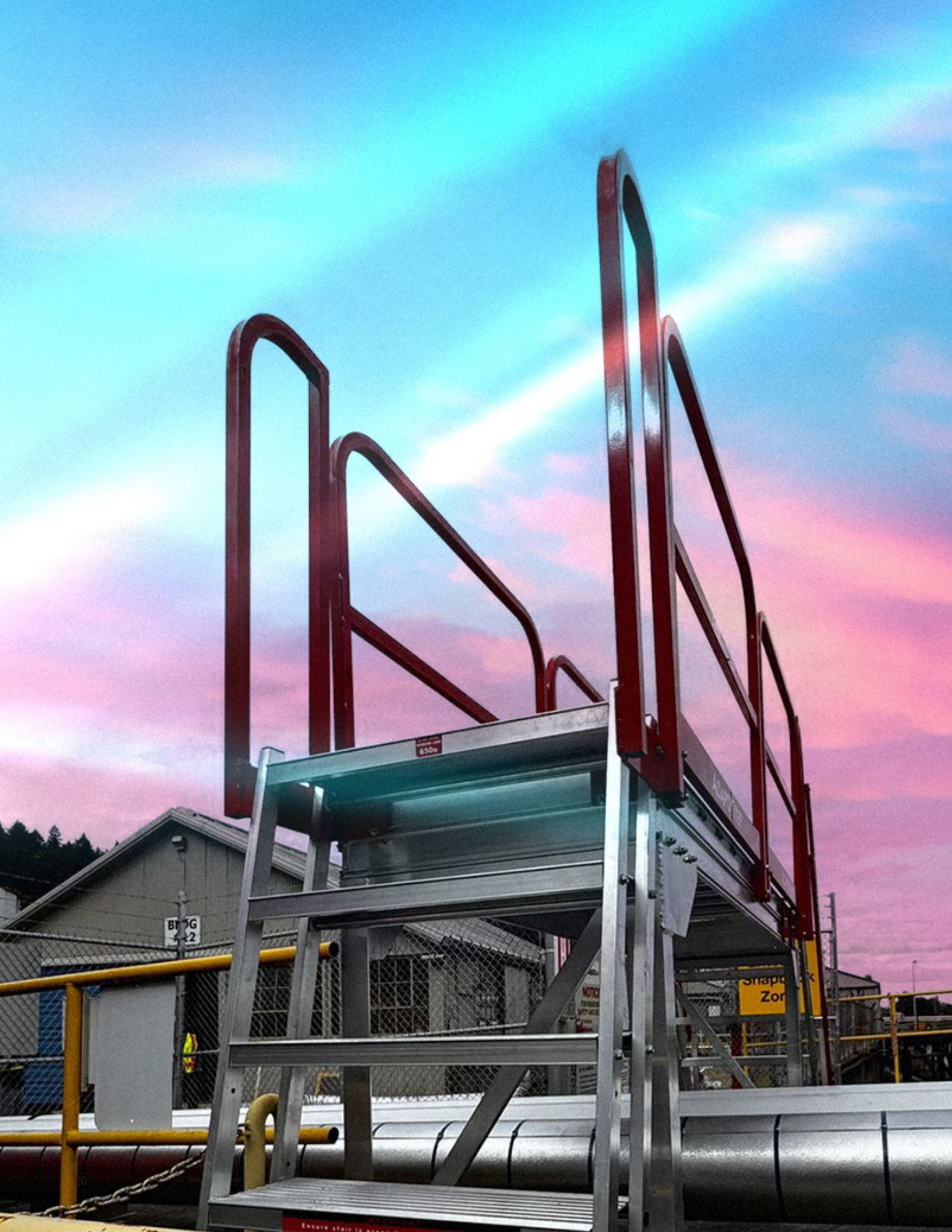
- Aluminum platform 10'-8" high wrapping around existing infrastructure
- Stairs at a 70° entry angle for direct, ergonomic access
- Adjustable concrete-mounted base plates
- OSHA-compliant guardrails, self-closing gate, and midrails
- Tee-slot channels for modular add-ons and future upgrades
- Precision-cut sections for pipes, brackets, and equipment clearance

The modular design assured compatibility without additional site modifications, giving Linde a safe, code-compliant,

## THE RESULT

Through early collaboration with Linde, we delivered concept drawings, 3D visuals, and on-site consultation to ensure accuracy and alignment. The installed system now serves as a permanent access solution—improving safety, eliminating ladder use, and streamlining maintenance workflows with minimal site disruption.





# PROJECT PROFILE: CUSTOM CROSSOVERS FOR SUNOCO'S CRITICAL INFRASTRUCTURE

## OVERVIEW

At SafeSmart Access, we're dedicated to overcoming unique industrial challenges with tailored, safety-driven solutions. For Sunoco, our team delivered a customized access solution to streamline navigation around critical infrastructure and improve site efficiency, while ensuring robust safety standards. The crossover platforms were designed to streamline access from one side of the ducting to the other, giving workers a shorter distance to walk.

Sunoco is one of the largest independent fuel distribution companies in the United States. Their rich, 130 plus-year heritage, reputation for innovation, and commitment to their local communities are foundational elements of this iconic American brand. Today, Sunoco distributes fuel to over 5,000 gas station locations in more than 30 states.

## THE CHALLENGE

Sunoco's site featured dense piping, ductwork, and fixed deck structures that obstructed routine access. Traditional solutions like ladders or removable scaffolds risked operational disruption, introduced fall hazards, and required time-intensive installations.

## OUR SOLUTION

SafeSmart delivered two custom AdaptaStep crossover platforms engineered to contour each site layout:

- One platform cleared parallel ducts to create a seamless walking path.
- A second crossover, paired with AdjustaStairs, navigated around deck structures and guardrails using adjustable support legs.
- A heavy-duty drive-over ramp was prebuilt and adapted onsite to overcome uneven slope conditions—ensuring structural integrity and safe pedestrian or lightweight vehicle use.

## THE RESULT

By delivering initial design drawings and performing in-person site fieldwork, SafeSmart enabled precise fabrication. When unexpected onsite terrain issues arose, our team made real-time adjustments—demonstrating our ability to adapt and deliver without sacrificing quality or safety.

Sunoco received customized access platforms that:

- Navigate complex duct and equipment layouts efficiently.
- Provide stable, OSHA-compliant walking access.
- Maintain integrity despite challenging site conditions.
- Allow future usability through modular, adjustable design.





## LOS ANGELES

13238 Florence Ave,  
Santa Fe Springs, CA 90670

## NEW YORK

2 Vilet Farm Road,  
Asbury, NJ 08802

**ADAPTASTEP™**  
**THE ULTIMATE CROSSOVER**  
**WALKWAY SYSTEM**

☎ 800-869-1525

✉ [sales@safesmartaccess.com](mailto:sales@safesmartaccess.com)

🖱 [safesmartaccess.com](http://safesmartaccess.com)