

ENERGY ACCESS FIELD GUIDE

A Practical Guide to Safer, Faster Access Across the Worksite

INTRODUCTION



WHO WE ARE

SafeSmart is a global leader in engineered access solutions, trusted by organizations operating in complex, safety-critical environments where reliability, efficiency, and worker protection are paramount. Across construction sites, industrial facilities, aviation maintenance operations, mining projects, energy infrastructure, and large-scale manufacturing environments, SafeSmart systems enable crews to move safely and efficiently between elevations while maintaining productivity and compliance.

For more than three decades, SafeSmart has partnered with contractors, engineers, and facility operators to solve access challenges that conventional ladders, scaffold, and improvised solutions often fail to address. Our portfolio spans a broad range of modular and engineered systems—from portable adjustable stair systems to fully integrated platforms and large-scale access structures—designed to support every stage of a project, from construction and commissioning to inspection, maintenance, and long-term operations.

What sets SafeSmart apart is our commitment to engineering the right solution for each environment. Every system is developed with a deep understanding of real-world site conditions, operational demands, and safety requirements. Through advanced modular design, high-strength materials, and practical field experience, SafeSmart delivers access systems that reduce risk, improve workflow, and eliminate inefficient methods of working at height.

Safe, reliable access is not optional in today's industries—it is fundamental to keeping projects moving and people protected. That is why organizations around the world rely on SafeSmart as the trusted authority in engineered access solutions.

TRUSTED BY THE PROS

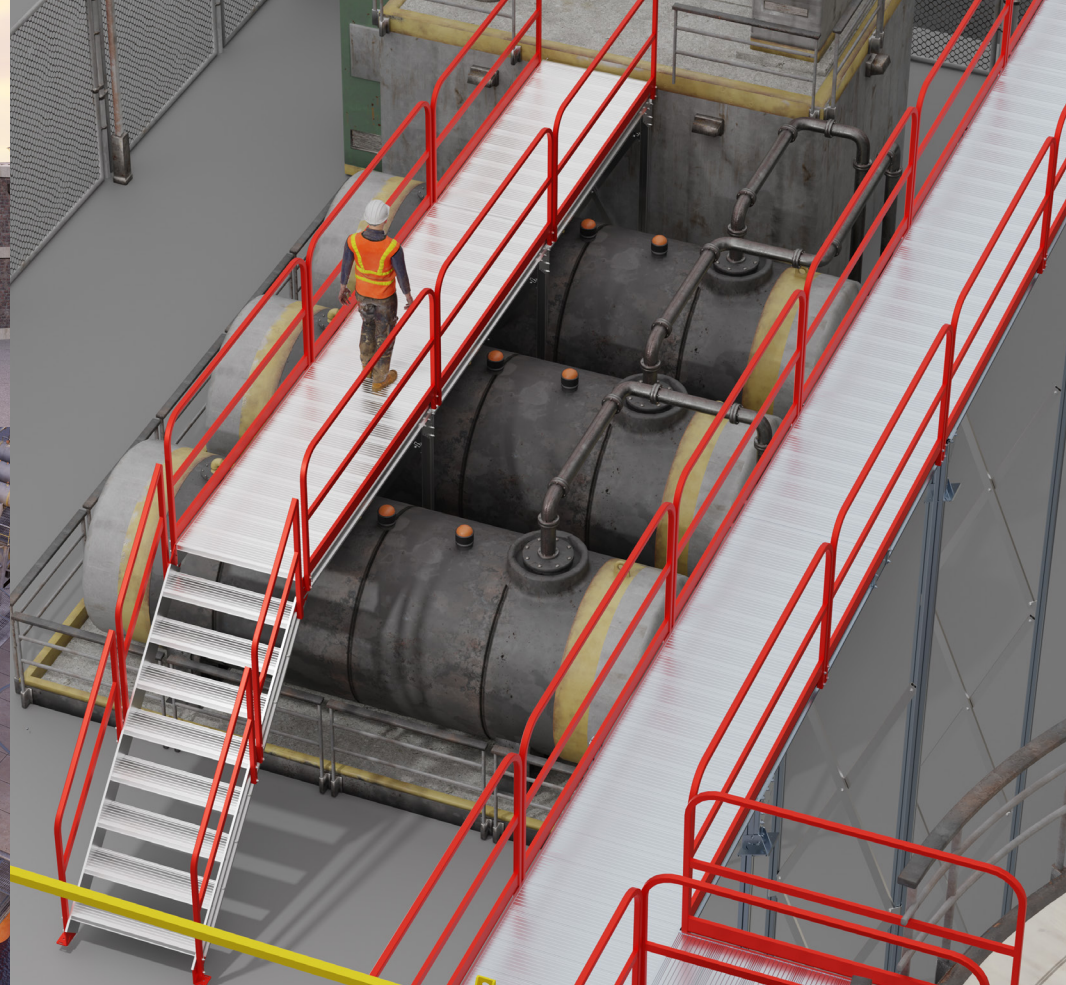
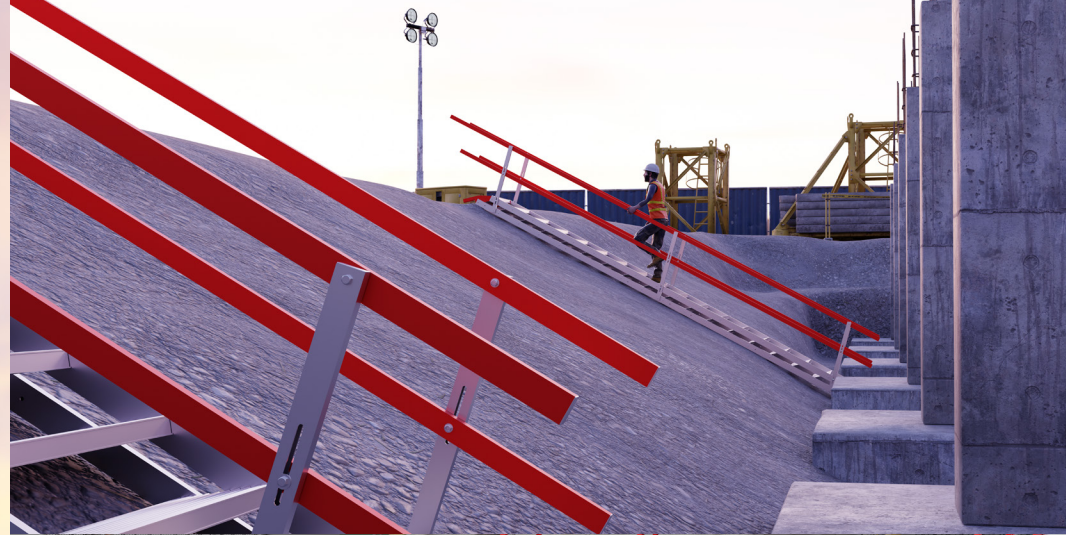


CONTACT US

WEST OFFICE:
13238 Florence Ave.
Santa Fe Springs, CA
90670

EAST OFFICE:
2 Vilet Farm Road,
Asbury, NJ
08802

1.800.869.1525
 safesmart.com
 sales@safesmart.com





“AdjustaStairs are one of the best products on the market today. We are 100% committed to this product, and suggest everyone does the same.”

DIRECTOR OF SAFETY | THE PACIFIC COMPANIES

Introducing **AdjustaStairs™** The Articulating, Height-Adjustable Stair System

AdjustaStairs™ is SafeSmart’s flagship portable stair system, designed to replace unsafe ladders and eliminate the need for temporary scaffold structures. AdjustaStairs delivers a stable, self-leveling stair solution that can be deployed in minutes and adapted instantly to changing heights.



Height Ranges

Standard Models from 2’ - 16’

High-Access Models from 11’ - 32’

Widths available in 24”, 36”, & 48”

The Smarter Alternative to Ladders and Scaffold

Traditional ladders and scaffold were never designed for the speed and demands of modern worksites. AdjustaStairs delivers a safer, faster, and more efficient way for crews to move between elevations.

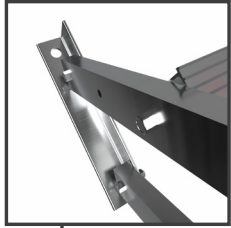
See how AdjustaStairs compares to traditional access methods.

CAPABILITIES	AdjustaStairs™	SCAFFOLD	LADDERS
Safe worker access between levels	✓	✓	✗
Carry tools & equipment safely	✓	✓	✗
Multiple workers simultaneously	✓	✓	✗
Rapid setup (minutes)	✓	✗	✓
Reusable across job sites	✓	✓	✓
Self-leveling steps	✓	✗	✗
Stable stair access	✓	✓	✗
Reduces worker fatigue	✓	✓	✗
No complex assembly required	✓	✗	✓
Portable & easy to relocate	✓	✗	✓

Engineered Performance

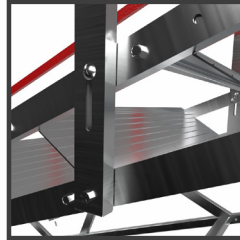
Key Features of the AdjustaStairs™

AdjustaStairs combines patented engineering with practical jobsite functionality to deliver safer access between levels. The result is a stair system that deploys quickly, adapts to changing heights, and supports efficient worker movement.



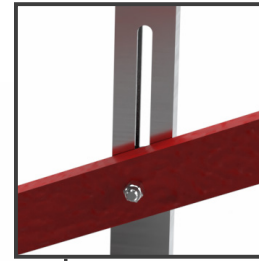
Handrail-to-Stringer Connection

Pivoting connections allow the handrails and stringers to articulate as the stair pitch changes, drawing the stringers closer at lower angles and spreading apart at steeper pitches.



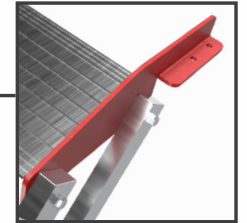
Anchoring Feet

Heavy-duty stair feet provide a stable base and allow the system to be anchored to concrete, timber, steel, or compacted ground using appropriate fasteners or ground pins.



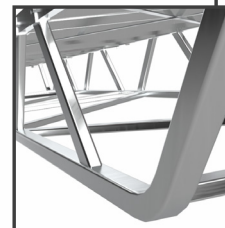
Handrail & Midrail System

Handrail and midrail assemblies pivot with the stair frame to accommodate pitch changes while maintaining continuous fall protection.



Upper Landing Fixing Points

Integrated anchor plates secure the stair to the upper landing using bolts, screws, or anchors appropriate for the surface material.

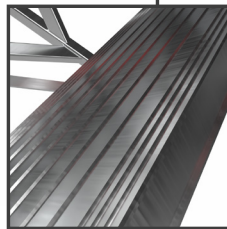


Truss-Stringer Mounting Bracket

A dedicated bracket secures the truss to the stair stringers using a bolted connection, creating a rigid structural reinforcement.

Self-Leveling Tread System

Articulating treads automatically adjust with the stair pitch to remain parallel with the ground, maintaining consistent and level footing across the full height range.



Reinforced Structural Support Truss

The bolt-on truss increases rigidity and structural support for higher load applications.

- Increases system load rating to 1,100 lbs

How AdjustaStairs™ Work

Precision Engineering & Design

AdjustaStairs use an articulating stair design that automatically changes its angle to match the height of the structure being accessed. As the stair rises or lowers, the frame pivots at the base while the treads remain level, maintaining safe and consistent footing.

The diagram illustrates the geometric relationship between:

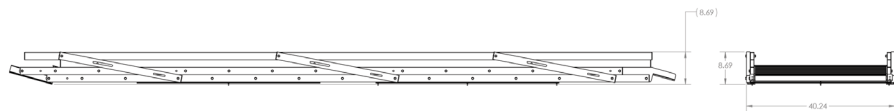
- **Vertical Height (ft)** – the elevation of the landing point
- **Horizontal Reach (ft)** – the distance from the stair base to the structure
- **Stair Angle (°)** – the working angle of the stair
- **Number of Steps** – the stair configuration required to reach that height

As the height increases, the stair naturally extends further outward, maintaining a safe working angle and stable step spacing.



Compact Folding Design for Efficient Storage & Transport

The articulating geometry that allows AdjustaStairs to reach multiple heights also enables the stair to collapse into a compact profile when fully lowered. As the stair angle decreases, the frame pivots inward and the components fold together, creating a flat configuration for easier transport and storage.



Industry Applications

Purpose-Built Solution for a Wide Range of Uses

Floor-To-Floor Access

- Replace outdated methods for primary access
- Faster setup than scaffold stair towers
- 36" models support higher foot traffic
- Easily relocated as needed



Slope Access

- Stair frame articulates to follow terrain
- Treads remain level on slopes
- Safer alternative to ladders on batters
- Ideal for facility and operation applications





AdaptaStep gave us a flexible access solution where standard platforms simply wouldn't work. The modular design made it easy to configure exactly what our site needed.

MAINTENANCE MANAGER | CONFIDENTIAL PROJECT



Introducing AdaptaStep™

The Modular, Configurable Platform System

Built around a modular extrusion-based framework, AdaptaStep allows platforms, stairs, guardrails, and structural components to be configured into a wide range of access solutions—from simple work platforms to large crossovers, catwalks, bridges, and multi-level mezzanine structures.



The Smarter Alternative to Site-Built Solutions

Improvised platforms and site-built stairs were never designed to deliver the durability, safety, and consistency required in facilities. AdaptaStep provides a fully engineered solution that replaces temporary builds with reliable, long-term access systems.

See how AdaptaStep compares to traditional site-built access.

CAPABILITIES	AdaptaStep™	STEEL PLATFORMS	SITE-BUILT WOOD
Engineered access platform system	✓	✓	✗
Modular & configurable layouts	✓	✗	✗
Crossovers, bridges & catwalks	✓	✗	✗
Consistent guardrail protection	✓	✓	✗
Corrosion-resistant	✓	✗	✗
Long-term durability	✓	✓	✗
Reconfigurable as needs change	✓	✗	✗
Fast bolt-together installation	✓	✗	✗
Clean professional installation	✓	✓	✗
Designed for long-term facility use	✓	✓	✗

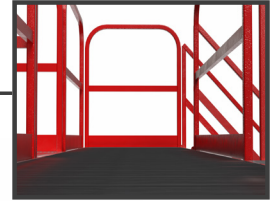
Engineered Performance

Key Features of the AdaptaStep™



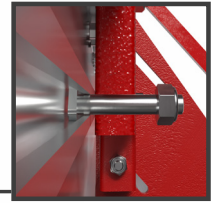
70° Stair Attachment

Provides safe, compact stair access where space is limited while maintaining comfortable stair geometry and secure footing.



Durable Handrails with Toeboards

Heavy-duty aluminum guardrails and integrated toeboards provide fall protection and help prevent tools or materials from falling from elevated platforms.



T-Bolt Hardware

T-bolt fasteners lock into the patented extrusion channels, allowing components to securely connect for fast assembly.



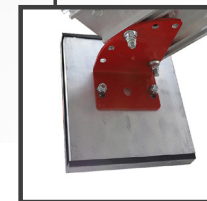
45° Stair Attachment

Creates comfortable stair access for frequent worker movement between platforms while maintaining consistent step spacing and handrail protection.



Integrated Joiner System

Precision-engineered joiners allow stairs and ladders to securely attach to AdaptaStep platforms, creating rigid and stable access connections.



Optional Non-Penetrating Feet

Non-penetrating feet allow AdaptaStep™ systems to be securely installed without drilling into roofs or existing surfaces, preserving waterproofing while maintaining stable, compliant support.



90° Ladder Attachment

Allows vertical ladder access in confined areas where stair systems are not practical, maintaining safe transitions between levels.



Limitless Configurations

The Most Versatile Access System on the Market

Crossovers

AdaptaStep crossovers provide safe, engineered passage over pipes, conveyors, utilities, and other fixed equipment where uninterrupted worker movement is critical.



Catwalks

AdaptaStep catwalk systems create safe elevated walkways along machinery, process equipment, and production lines where regular access is required.



Platforms

AdaptaStep work platforms provide stable, compliant access to equipment, machinery, and service areas where technicians must safely perform tasks at height.



Bridging & Ramps

AdaptaStep bridging systems connect structures and equipment surfaces where safer, more durable transitions across gaps or elevation changes are required.



Mezzanines

AdaptaStep mezzanine systems allow facilities to create elevated work areas, service platforms, or storage space within existing structures without permanent construction.

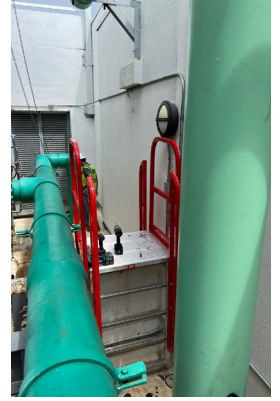


Industry Applications

Purpose-Built Solution for a Wide Range of Uses

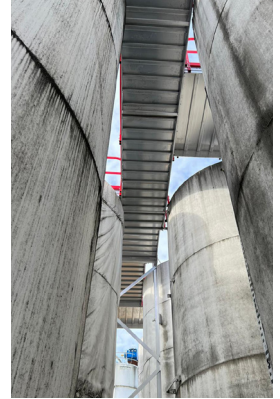
Facility Equipment Access

- Safe service access to pumps, compressors, and equipment
- Configurable platforms positioned around machinery
- Designed for routine maintenance and operational servicing
- Common in manufacturing plants and industrial facilities



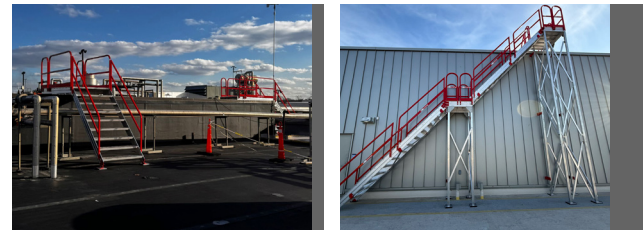
Oil & Gas Infrastructure

- Crossovers over pipelines, manifolds, and processing lines
- Access platforms for valves, meters, and instrumentation
- Corrosion-resistant aluminum suited for harsh environments
- Ideal for refineries, terminals, and processing facilities



Rooftop Navigation

- Safe crossover access over ducts, piping, and conduit runs
- Bridges elevation changes between roof zones and equipment
- Guardrail protection around high-traffic maintenance areas
- Ideal for HVAC systems, solar infrastructure, and rooftop utilities





Z-Stack has been incredible for this project. We used it during the excavation phase, and now it's climbed with the project - almost 10 stories tall! We wouldn't trade it for anything."

SUPERINTENDANT | CONFIDENTIAL PROJECT

Introducing Z-Stack™

The Modular, Craneable Stair Tower



Craneable

Designed with integrated lifting points for safe crane placement during installation.



Lightweight Aluminum

High-strength aluminum construction reduces weight & maintains structural durability.



Fast Installation

Pre-engineered bolt-on components allow for quick, efficient assembly on site.



Reusable & Permanent Use

Suitable for reusable temporary deployment and long-term installed access solutions.

The Smarter Alternative to Ladders and Scaffold

Traditional ladders and scaffold were never designed for the speed and demands of modern worksites. Z-Stack delivers a safer, faster, and more efficient way for crews to move between elevations and reposition as needed on-site.

See how Z-Stack compares to traditional access methods.

CAPABILITIES	Z-STACK™	SCAFFOLD	LADDERS
Safe worker access between levels	✓	✓	✗
Carry tools & equipment safely	✓	✓	✗
Multiple workers simultaneously	✓	✓	✗
Rapid setup (hours vs. days)	✓	✗	✓
Reusable across job sites	✓	✗	✓
Modular, scalable height system	✓	✓	✗
Continuously compliant design	✓	✗	✗
Stable stair access vs vertical climb	✓	✓	✗
Improves worker flow between levels	✓	✗	✗
Craneable & easy to relocate	✓	✗	✓

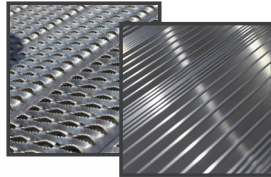
A Closer Look

Innovation in Every Detail



MODULE JOINER & CRANE HOOK

Modules connect with integrated joiners that also serve as crane hooks for lifting individual modules. Lifting Bars available for lifting fully assembled structure.



ANTI-SLIP TREADS

Provides secure footing in demanding environments. Grip-Strut Treads available.



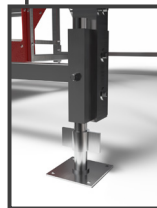
TOEBOARDS

Integrated toeboards can be added before or after assembly, preventing tools, debris, and other materials from falling from the tower.



FULLY WELDED FRAMES

Pre-fabricated frames simplify installation by minimizing components, while increasing overall system strength.



ADJUSTABLE BASE JACKS

Anchors the tower to approved surfaces, and adjusts height to level the system on uneven ground. Castors & Mobile Chassis customizations available.

Footprint Options

A Tower for Every Operation

Standard Option

Full-Size Tower Configuration

Standard Z-Stack towers offer a wider access system suited for construction and industrial environments, supporting higher worker traffic and the movement of tools and materials between levels.

TOP STANDARD MODULE

DIMENSIONS

LENGTH	WIDTH
9'-4"	6'-10"

COMPONENTS

QTY	DESCRIPTION
1	Right Frame
1	Left Frame w/ (1) Gate
1	Brace Frame
1	Brace Frame w/ (2) Gates
1	Middle Handrail
1	Top Handrail
4	Vertical Connectors (for Craning)

MID-LEVEL STANDARD MODULE

DIMENSIONS

LENGTH	WIDTH
9'-4"	6'-10"

COMPONENTS

QTY	DESCRIPTION
1	Right Frame
1	Left Frame w/ (1) Gate
1	Brace Frame
1	Brace Frame w/ (2) Gates
1	Middle Handrail
2	Z-Stack Stairs w/ 4-Plank Deck
4	Vertical Connectors

BOTTOM STANDARD MODULE

DIMENSIONS

LENGTH	WIDTH
9'-4"	6'-10"

COMPONENTS

QTY	DESCRIPTION
1	Right Frame
1	Left Frame w/ (1) Gate
1	Brace Frame
1	Middle Handrail
2	Z-Stack Stairs w/ 4-Plank Deck
4	Vertical Connectors
4	Base Jack Holder
4	Adjustable Base Jacks

Compact Option

Reduced Footprint Configuration

Compact Z-Stack towers provide safe vertical access with a reduced footprint, making them ideal for rooftops, equipment platforms, and permanent facility access where space is limited.

TOP COMPACT MODULE

DIMENSIONS

LENGTH	WIDTH
7'-7"	4'-11"

COMPONENTS

QTY	DESCRIPTION
1	End Frame
1	Access End Frame
1	Left Frame
1	Right Frame
1	Middle Handrail
1	Top Handrail
4	Vertical Connectors (for Craning)

MID-LEVEL COMPACT MODULE

DIMENSIONS

LENGTH	WIDTH
7'-7"	4'-11"

COMPONENTS

QTY	DESCRIPTION
1	End Frame
1	Access End Frame
1	Left Frame
1	Right Frame
1	Middle Handrail
2	Compact Z-Stairs 24" Wide
4	Vertical Connectors

BOTTOM COMPACT MODULE

DIMENSIONS

LENGTH	WIDTH
7'-7"	4'-11"

COMPONENTS

QTY	DESCRIPTION
1	End Frame
1	Access End Frame
1	Left Frame
1	Right Frame
1	Middle Handrail
2	Compact Z-Stairs 24" Wide
4	Vertical Connectors
4	Z-Stack Adjustable Base Jack Kits

Safe Landing Solutions

Ensuring Continuous Safe Access at the Exit Point

Because Z-Stack towers are modular, the final landing height may not always perfectly match the elevation of the structure being accessed. SafeSmart provides engineered transition solutions that allow workers to safely step on or off the tower without unsafe gaps or improvised site-built solutions.

Depending on the height difference, systems such as AdaptaStep™ bridging platforms or AdjustaStairs™ can be installed to create a safe, compliant transition—ensuring continuous protected access from ground level to the final destination.

9.6" to 24" Height Difference Solution **ADAPTASTEP™ Bridging**

AdaptaStep provides a modular bridging platform designed to safely span elevation differences between the Z-Stack™ landing and the destination surface.

Key Benefits:

- Quick bolt-on installation to Z-Stack
- Adjustable modular configuration
- Creates safe bridging between structures
- Ideal for rooftop, platform, and equipment access



24" to 48" Height Difference Solution **ADJUSTASTAIRS™**

AdjustaStairs provides a self-leveling stair transition that safely connects the Z-Stack landing to higher or lower elevations.

Key Benefits:

- Self-leveling treads adjust to height differences
- Rapid installation and repositioning
- Maintains safe stair access between levels
- Eliminates unsafe step-downs or improvised stairs



Engineered Access from Ground to Destination

SafeSmart solutions ensure workers remain protected through every stage of vertical access—from ground level, up the Z-Stack tower, and safely onto the final structure.

Industry Applications

Purpose-Built Solution for a Wide Range of Uses

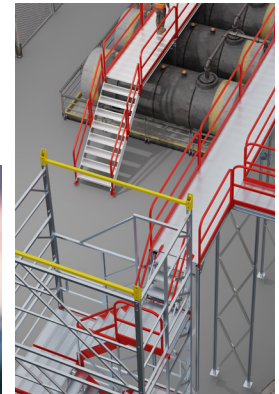
Facility Roof Access

- Provides safe stair access to rooftop equipment
- Reduces reliance on ladders and cage ladders
- Can be enclosed for controlled facility access
- Ideal for mechanical systems and rooftop service



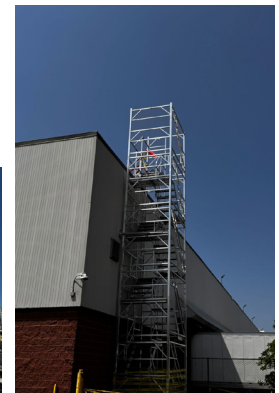
Tank Access

- Provides safe stair access to storage tanks
- Reduces reliance on steel stairs and cage ladders
- Can be connected to catwalks for multi-tank storage areas
- Ideal for plants and facility operations



Ladder Replacement

- Replaces fixed ladders with safer stair tower access
- Improves worker movement with hands-free access at height
- Reduces fall risk during frequent access and egress
- Provides compliant access for tools, materials, and personnel





Solar Inverter & Generator Access

SolarStairs & Precision-Fit Platforms

SolarStairs

SolarStairs provide a purpose-built inverter access solution designed to replace ladders, site-built steps, and other improvised access methods across solar facilities.

- Self-leveling design adapts to uneven terrain
- Safe, compliant inverter access
- Corrosion-resistant aluminum construction
- Built for long-term outdoor use



Wrap-Around Fixed Platforms

Wrap-Around Fixed Platforms provide permanent, elevated access around solar inverters and equipment, creating a safe, stable work surface for routine inspection and maintenance.

- Adjustable supports for uneven terrain
- Integrated stairs and walkways
- Permanent, low-maintenance solution



AdaptaStep™ Premium Platforms

AdaptaStep™ Premium Platforms are fully modular access systems designed to deliver safe, compliant access in complex environments. Utilizing patented aluminum extrusions and configurable components, they provide unmatched flexibility, durability, and scalability for long-term access applications.



Stacked Solutions

Off-The-Shelf Products for the Energy Industry

EasyRaise Mobile Work Platform

The EasyRaise is a mobile work platform designed for safe, efficient access to low-level heights across a wide range of applications. Built from high-grade aluminum, it offers strength, durability, and easy maneuverability, with a manual winch system that adjusts platform height from 55" to 110". As the platform is raised, the cantilevered deck extends outward, allowing users to safely reach over obstacles without overreaching. With a 495 lb capacity and a 28" x 38" deck, it provides a stable, OSHA-compliant solution for working at height with tools.

Platform Height	Platform Size
47.2" - 94.5" 4 Step	39.5" x 39.5"
55.1" - 110.2" 5 Step	39.5" x 39.5"
74.8" - 149.6" 7 Step	39.5" x 39.5"

EasyRaise Retrofit Forklift Channel Set of 2

Other sizes are also available - please inquire

- > Height adjustable platform with manual winch.
- > Incrementally adjustable with platform heights at 11" intervals.
- > Compact & mobile for easy deployment.
- > Cantilever length increases as the platform is raised.

495LBS
WLL

Complies with
MSHA Standards



SuperChariot Mobile Work Platform

The SuperChariot provides safe, stable elevated access without the need for ladders or unsafe alternatives. Designed for mobility and ease of use, it allows workers to quickly position and work at height with confidence. Available in multiple sizes from 2-step (22") to 8-step models reaching 7'4", it offers a practical solution for a wide range of applications.

Platform Height	Type
22.5"	2 Step
33.5"	3 Step
44.5"	4 Step
55"	5 Step
67"	6 Step
77.5"	7 Step
88.5"	8 Step

- > Full surround handrails.
- > Heavy-duty design
- > 440LB weight rating.
- > Step through access.

400LB
WLL

Complies with
MSHA Standards



Super Service Stand Mobile Work Platform

The Super Service Stand provides safe, stable low-level access with an integrated platform for improved control and productivity. Constructed from high-tensile aluminum, it is built to withstand tough environments while remaining lightweight and easy to position. Available in 2 to 5 step configurations, it offers a versatile solution for maintenance, servicing, and access across a wide range of industries.

Platform Height	Platform Size	Type
21.5"	31.5" L x 35.5 W	2 Step
32.5"	31.5" L x 35.5 W	3 Step
43.5"	31.5" L x 35.5 W	4 Step
53"	31.5" L x 35.5 W	5 Step
Super Service Stand Guardrail Set - Retrofit Removable Sleeve Guardrails with Self-Actuating Batwing Entry/Exit		2 - 5 Step

- > Large, safe work area with self-draining platform surface (for slip resistance in all conditions).
- > Wide stair treads for comfort and safety.
- > 60° step angle of access.
- > Quick release guardrails can be added or removed in seconds.
- > Dual Batwing Gates for full surround protection.

400LBS
WLL

Complies with
MSHA Standards

5 Year
Warranty



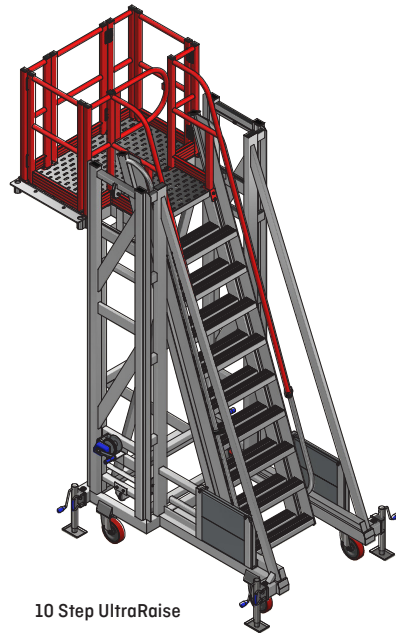
UltraRaise

Mobile Work Platform

The UltraRaise is a modular access platform engineered for safe, adaptable access across LNG facilities, refineries, power generation sites, and industrial maintenance environments. Featuring a mobile base, cantilevered platform, and adjustable height range, it allows crews to safely reach elevated equipment, piping systems, and difficult access points with precision.

Sizing	Description
77.6" - 133.1" Height	7 Step UltraRaise Fixed Cantilever H/Adj Platform w. 70deg Acc
111.0" - 199.6" Height	10 Step UltraRaise Fixed Cantilever H/Adj Platform w. 70deg Acc
47.2" x 59.1"	UltraRaise Retrofit Loop Guardrail Frame 1
78.7" x 78.7"	UltraRaise Retrofit Loop Guardrail Frame 2
118.1" x 23.6"	UltraRaise Bridge with removable Guardrail, Midrail & Toeboard (ea side)
88.4" x 31.5"	UltraRaise 10 Step Accessory - Retrofit Side Mounted Platform

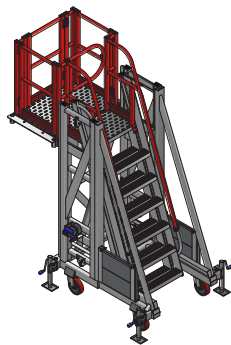
- > Platform height and bridge lengths are customizable.
- > Massive height adjustment range!
- > Compact and mobile for easy deployment and use in tight workshops.
- > 27.6" clear cantilever regardless of the height it is set at.
- > 3 access directions off the platform allowing for flexibility in configuration.
- > Bridging attachment to connect between units allows multiple configurations.
- > Bridging components no heavier than 37.5 lbs to allow easy install and dismantle.
- > Loop guardrail attachment can be placed in all 3 directions off the platform.
- > Loop guardrail support leg adjusts in 1.0" increments.



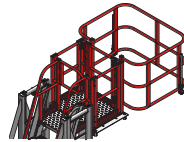
10 Step UltraRaise



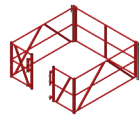
UltraRaise Bridge



7 Step UltraRaise



Small Loop Guardrail Frame



Large Loop Guardrail Frame

Super Maintenance Platform

Mobile Work Platform

The SuperChariot provides safe, stable elevated access without the need for ladders or unsafe alternatives. Designed for mobility and ease of use, it allows workers to quickly position and work at height with confidence. Available in multiple sizes from 2-step [22"] to 8-step models reaching 7'4", it offers a practical solution for a wide range of applications.

Platform Height	Platform Size	Type
22.5"	31.5" x 31.5"	2 Step
33.5"	31.5" x 31.5"	3 Step
44.5"	31.5" x 31.5"	4 Step
55"	31.5" x 31.5"	5 Step
67"	31.5" x 31.5"	6 Step
77.5"	39.5" x 39.5"	7 Step
88.5"	39.5" x 39.5"	8 Step
100"	39.5" x 39.5"	9 Step
111.5"	39.5" x 39.5"	10 Step
122"	39.5" x 39.5"	11 Step
130"	39.5" x 39.5"	12 Step
141.75"	39.5" x 39.5"	13 Step
155.5"	39.5" x 39.5"	14 Step

- > Engineers' approval, WLL rating & serial number certification plate.
- > Built tough with 3.2" x 2.0" marine grade aluminum RHS - no C channel.
- > Perforated & swagged deck for superior traction in wet and greasy conditions.



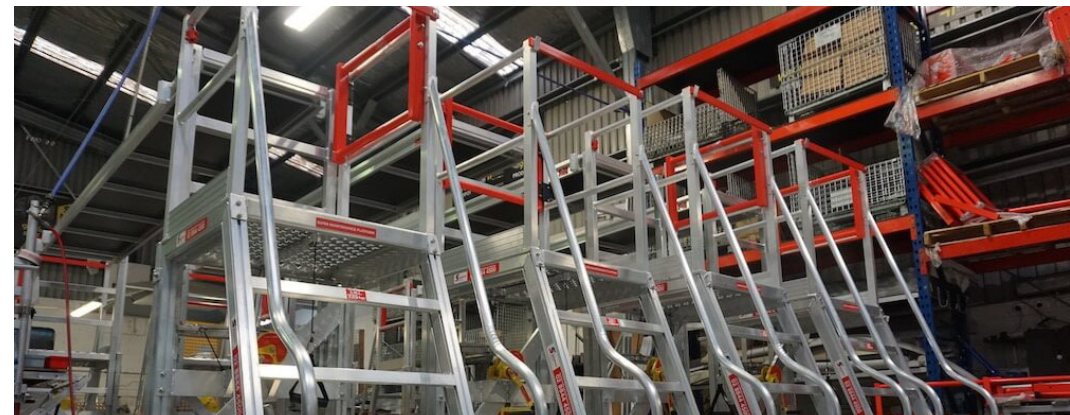
400LBS
WLL

Complies with
MSHA Standards

Load Tested Up to
8 Tonnes

5 Year
Warranty

Ergonomic
Lifting Handles



Cantilever Platform Mobile Work Platform

The Cantilever Access Platform is engineered for safe, close-proximity access throughout LNG facilities, refineries, power plants, and industrial maintenance environments. Its cantilevered design allows crews to work directly over piping, structural steel, and elevated equipment without overreaching, improving both safety and efficiency.

Platform Height	Platform Size	Steps
22.5"	31.5" x 70.9"	2 Step
33.5"	31.5" x 70.9"	3 Step
44.5"	31.5" x 70.9"	4 Step
55"	31.5" x 70.9"	5 Step
67"	31.5" x 70.9"	6 Step
77.5"	39.5" x 78.7"	7 Step
88.5"	39.5" x 78.7"	8 Step
100"	39.5" x 78.7"	9 Step
111.5"	39.5" x 78.7"	10 Step
122"	39.5" x 78.7"	11 Step
130"	39.5" x 78.7"	12 Step
141.75"	39.5" x 78.7"	13 Step
155.5"	39.5" x 78.7"	14 Step
7 Step Cantilever Platform 39.5" Upgrade Kit/Package*		
8 Step Cantilever Platform 39.5" Upgrade Kit/Package*		
9 Step Cantilever Platform 39.5" Upgrade Kit/Package*		
10 Step Cantilever Platform 39.5" Upgrade Kit/Package*		
11 Step Cantilever Platform 39.5" Upgrade Kit/Package*		
Retrofit Wind Down Jack Set		
Retrofit 31.5" Forklift Channel Set of 2 (suits up to 6 steps)		
Retrofit 39.5" Forklift Channel Set of 2 (suits 7 step and above)		



- > An essential tool for all machinery service workshops.
- > Allows you to get right into and up against your work area without reaching out from the platform.
- > Built tough, non-slip perforated deck and aluminum frame.

495LBS
WLL

Complies with
MSHA Standards

5 Year
Warranty

*39.5" upgrade kits will reduce the protrusion of the base rails, and increase the cantilever to 40" clear overhang.



SafeLoader Mobile Edge Protection

The SafeLoader is engineered to provide safe, controlled access during truck loading, unloading, and equipment transfer operations across active energy jobsites. Ideal for pipe yards, lay-down areas, fabrication facilities, and material handling zones, the platform eliminates the risks associated with climbing on trailers and transport equipment. Its enclosed guardrail system, 45° stair access, and mobile aluminum design provide crews with a safer, more efficient solution for high-frequency loading operations.



Platform Dimensions - Description

27.6" W x 55.1" H x 78.7" L Platform, Stairs one end
27.6" W x 55.1" H x 157.5" L Platform, Stairs one end
27.6" W x 55.1" H x 236.2" L Platform, Stairs one end
43.3" W x 55.1" H x 78.7" L Platform, Stairs one end
43.3" W x 55.1" H x 157.5" L Platform, Stairs one end
43.3" W x 55.1" H x 236.2" L Platform, Stairs one end

- > Comes standard with crane lifting points.
- > Bolt-on forklifting channels available
- > Fully cross-braced aluminum frame for a rigid platform.
- > Self-closing gate at entrance to platform
- > 8" heavy-duty castors, swivel & locking.
- > Originally designed for easy loading & unloading of trucks. Also compatible with a variety of heavy-duty vehicles, mining machinery and trains for loading and maintenance.

78.7" L
1100LBS
WLL

157.5" L @ 236.2" L
2200LBS
WLL

Complies with
MSHA Standards



A Better Way

 **SafeSmart**

www.safesmart.com

SafeSmart USA Location:
13238 Florence Avenue
Santa Fe Springs, CA 90670

1.800.869.1525

sales@safesmart.com

